

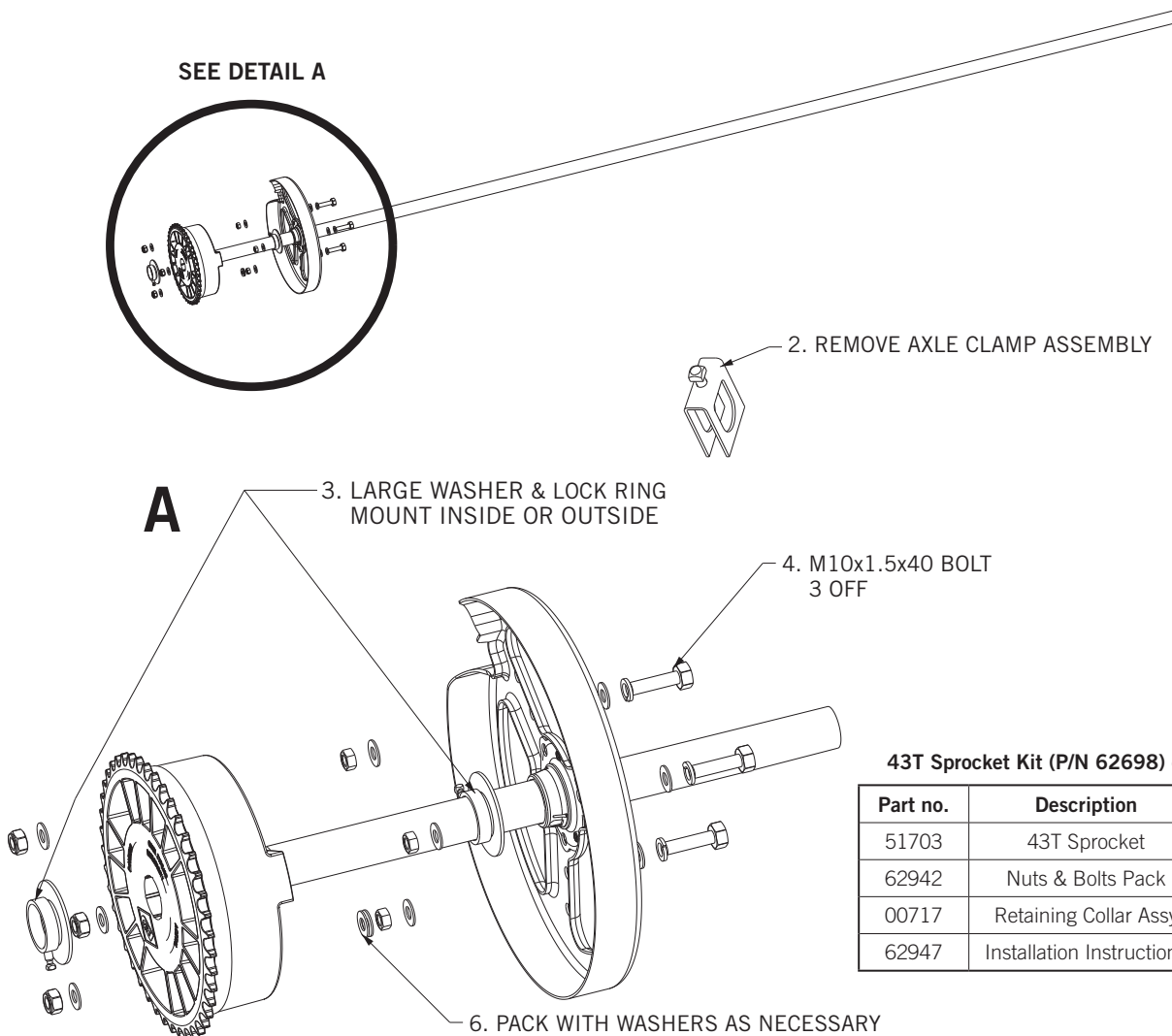


43 TEETH PLASTIC SPROCKET ROLL-A-DOOR INDUSTRIAL INSTALLATION INSTRUCTIONS

Part No. 62696

INSTALLATION STEPS

1. Position door for clear access to the end of the axle and drum.
2. Remove Axle Clamp Assembly.
3. Fit large washer and lock ring and tighten set screw (this prevents end float).
4. Fit M10 bolts secured with washers, a spring washer and a nut.
5. Fit 43T plastic sprocket and check alignment.
6. Pack with washers as necessary.
7. Secure 43T sprocket with washers and nyloc nuts.



43T Sprocket Kit (P/N 62698) contains

Part no.	Description	Qty
51703	43T Sprocket	1
62942	Nuts & Bolts Pack	1
00717	Retaining Collar Assy	1
62947	Installation Instructions	1

DISCLAIMER

*THESE INSTRUCTIONS ARE INTENDED FOR PROFESSIONAL GARAGE DOOR INSTALLERS
and only apply to the fittings*

Note: All references are taken from inside looking out

