



# Roll-A-Shutter™

SERIES 65 INDUSTRIAL TYPE ALUMINIUM SHUTTER



The B&D Roll-A-Shutter™ Series 65 Industrial Type Aluminium Shutter has an interlocking slat curtain and is specifically designed from aluminium extrusion to provide an attractive appearance without compromising door security.

The B&D Roll-A-Shutter Series 65 is suitable for applications such as retail shopfronts, arcades, sporting complexes, clubs and bars. The door curtain can be slotted to create a different design or increase ventilation where necessary. Slotted curtains can be manufactured on request with a clear poly carbonate backing panel to ensure the prevention of foreign particle entry.

B&D Roll-A-Shutter Series 65 can be supplied in a vast range of sizes and colour finishes.

## RECOMMENDED APPLICATION

- Ideal for shopping centre shopfronts, storage rooms, arcades, sporting complexes, clubs and bars
- Suitable for openings ranging from 1000mm to 4000mm (h) and up to 6000mm (w)
- High level of security.

## BOTTOM RAILS

The B&D Roll-A-Shutter Series 65 is supplied with a sturdy T-Rail aluminium bottom rail which provides additional strength to the door. This bottom rail may be supplied with an optional weather seal to prevent the unwanted entry of foreign particles.

## ROLLER DRUM

148mm or 229mm Spiral drum rotating on a 34mm heavy duty shaft fitted with high speed industrial bearing & helical springs to counterbalance the door in accordance with the manufacturers specifications.



**Doors & Openers®**

THERE'S SO MUCH MORE BEHIND A B&D DOOR

Call 13 62 63 or visit [www.bnd.com.au](http://www.bnd.com.au) for further information.

# THERE'S SO MUCH MORE BEHIND A DOOR

## CURTAIN

65mm x 1.6mm Aluminium extrusion. Alternative aluminium sections are fitted with nylon end clips to reduce friction. Running in 50mm x 30mm extruded guides.

## SIZES

For openings up to 4000mm (h) and 6000mm (w).

## SPRING ASSISTED DRUM ASSEMBLY

The spring assisted counterbalanced roller drum is fabricated from high quality steel spiral ducted tube or spiral welded tube. The central shaft carries helical springs to ensure smooth and effortless operation.

## OPERATION

Roller Shutter can be either manually operated or motorised depending upon size requirements. There are a range of electric motors available depending on application and usage.

## VERSATILE TRACKING SYSTEM

The 50mm x 30mm aluminium door tracks can be mounted between wall fix or behind wall fix. The guides can also accommodate a rubber twin fin extrusion or mohair felt buffer to ensure a quieter operation. Manual doors only are fitted with door stops.

## LOCKING

The B&D Roll-A-Shutter Series 65 may be fitted with a centrally mounted locking mechanism within the mid rail at approximately 900mm above floor level or alternately within the bottom rail. The locking mechanisms are generally concealed behind extruded polycarbonate covers for aesthetics and tamper proofing. Locking is not recommended for motorised doors.

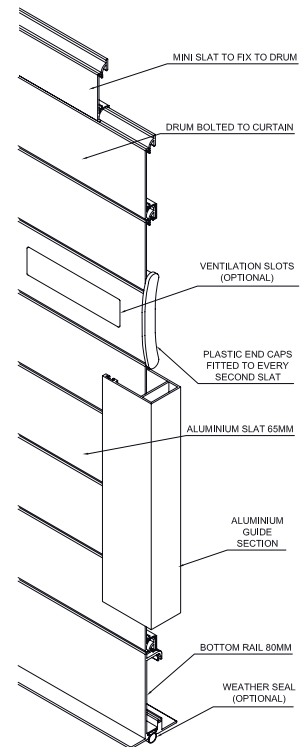
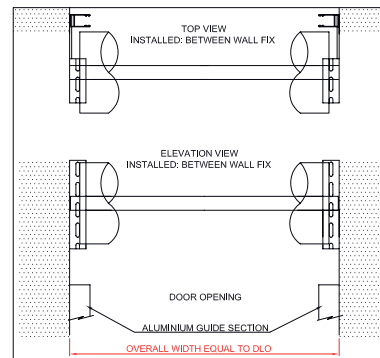
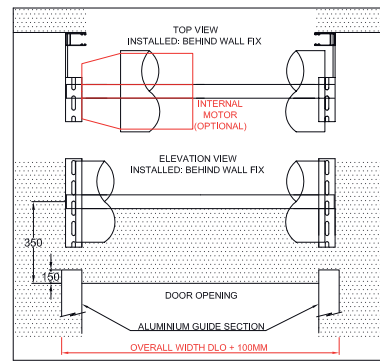
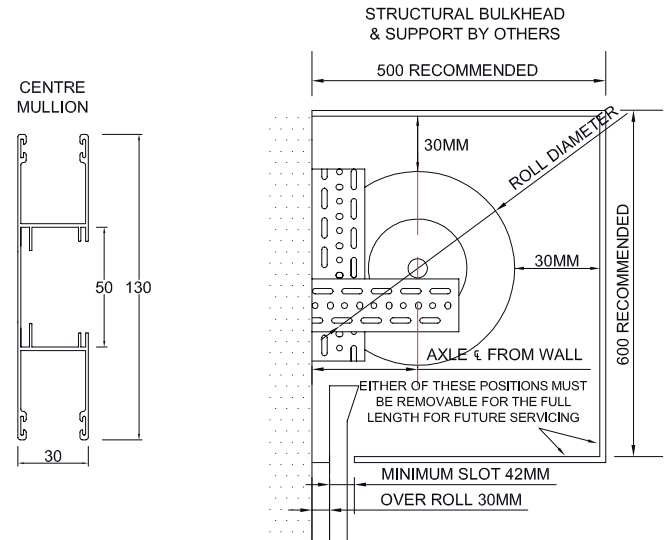
## SLOTING

Provide 95mm x 25mm vent slots at 70mm spacing as required in the roller shutter. Slotting may include polycarbonate backing panel to reduce foreign particle entrance.

## DIMENSIONS (all measurements in mm)

DOOR HEIGHT	DRUM 150MM		DRUM 229MM	
	ROLL DIAMETER	CENTRE AXLE FROM WALL	ROLL DIAMETER	CENTRE AXLE FROM WALL
900	260	140	305	162
1200	260	140	305	162
1500	260	140	320	170
1800	270	145	330	175
2100	270	145	350	185
2400	280	150	350	185
2700	300	160	360	190
3000	300	160	370	195
3300	340	180	380	200
3600	360	190	395	207

## CLEARANCES



## WARRANTY

A 12 month limited material, labour and workmanship warranty applies.

B&D Doors has offices servicing all states. For more details on this product or our other ranges, phone **13 62 63** or visit [www.bnd.com.au](http://www.bnd.com.au)

### Notes / Information

- B&D Roll-A-Shutter™ Series 65 Industrial Type Aluminium Shutters are covered by a 12 month warranty, for complete door and parts, as recommended in the door's handbook. Full details of the warranty are available from [www.bnd.com.au](http://www.bnd.com.au). 12 month warranty only applies to doors purchased and installed in Australia & New Zealand. Warranty only valid if warranty conditions are met.
- For areas within one kilometre of a corrosive environment eg. salt air or industrial fallout, special care and maintenance are generally required. Consult B&D or your B&D Accredited Dealer for advice.
- The company reserves the right to make changes or improvements to the products or accessories without notice and without incurring any obligation to make similar changes or improvements to goods previously ordered. Specifications subject to change without notice.



**Doors & Openers®**

THERE'S SO MUCH MORE BEHIND A B&D DOOR

Call **13 62 63** or visit [www.bnd.com.au](http://www.bnd.com.au) for further information.