



GRIFCO

Wall Mount Kit Installation Manual

Rev: 602140



Maestro Wall Mount Kit (Part No. WMK1)

1 x Pre-Assembled Circuit Board Enclosure	4 x Black 20mm Gland
• Base	1 x Terminal Block
• Lid + Screws	1 x 1.5m RJ11 Cable
• Cradle	1 x Male to Male RJ11 Adaptor
• 2 x Black 20mm Rubber Grommet	
• 4 x Plastic Screws / Nuts / O-rings	

Introduction

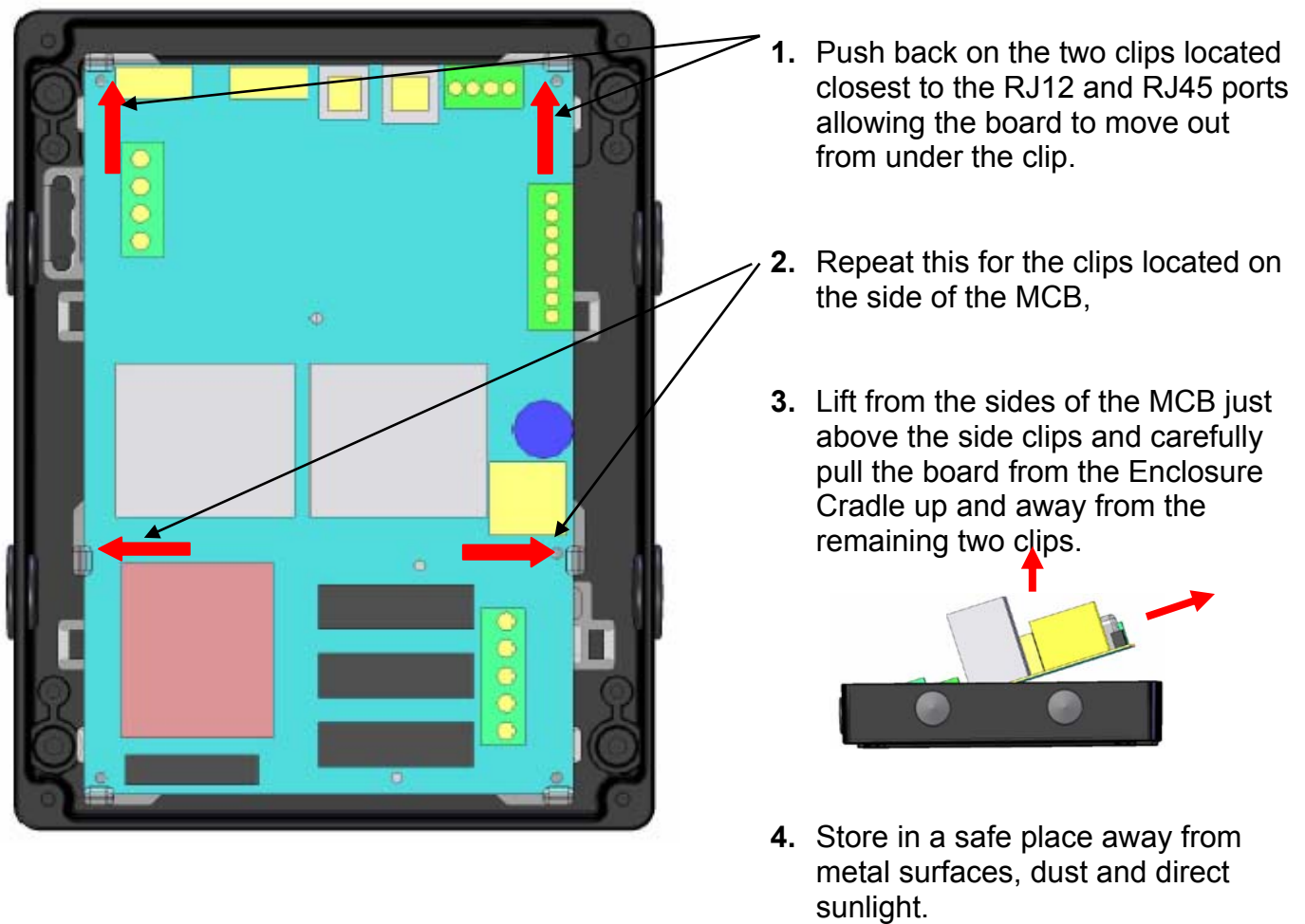
The Maestro Wall Mount Kit allows the Main Control Board of the operator to be removed from the MCB enclosure above the motor and repositioned in any location within a 1.5m radius of the operator.

Installation*

**Installation must be carried out by a qualified electrician*

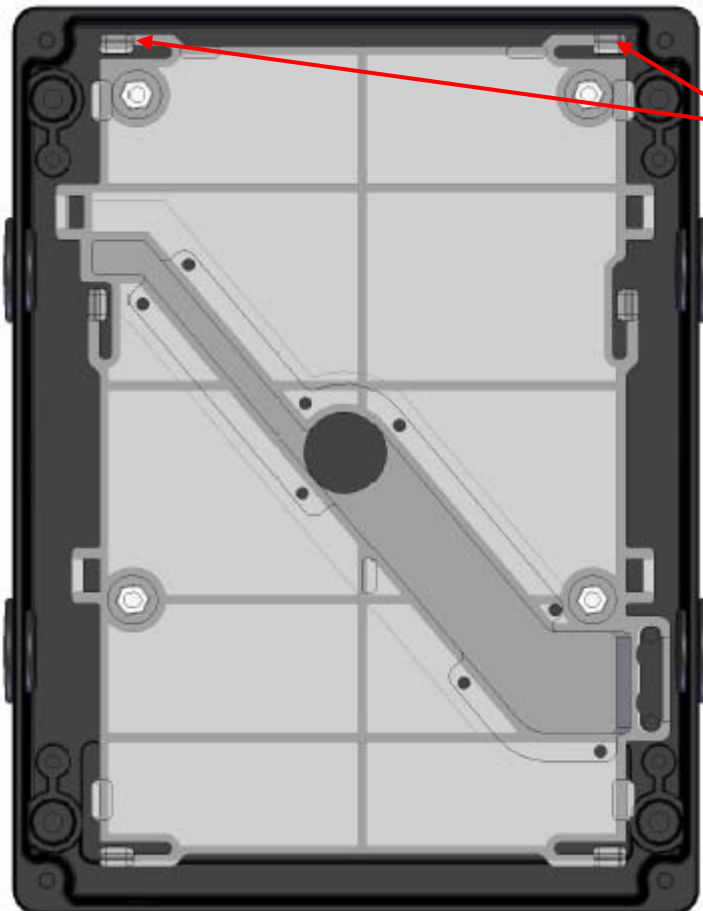
It is recommended that installation of the Maestro Wall Mount Kit be completed before the Maestro Operator is installed if possible.

- Remove the clear plastic lids from both the supplied Wall Mount enclosure, and the existing enclosure mounted on the Maestro (operator enclosure).
- Take note of the motor wire connections on the four and five block terminals of the MCB as they must be re-connected identically further on.
- Remove all connections to the Main Controller Board (MCB) including Optical Encoder (OE) cable, controller cable, motor wires, and power supply if present (if the controller cable or power supply is present withdraw the cable or wires from the enclosure, and replace gland with a supplied grommet).
- Very carefully remove the MCB from the enclosure cradle:

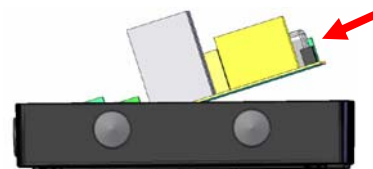


Please read and understand instructions before attempting installation

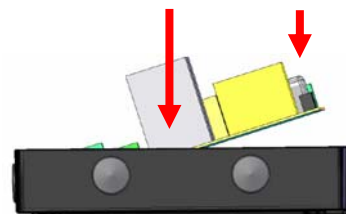
- Remove the clear plastic cable cover from the enclosure cradle and release each of the wires from the cable retainers.
- Connect the RJ11 1.5m extension cable to the OE cable sitting loosely within the operator enclosure using the included RJ11 male to male adaptor.
- Draw the extended OE cable through one of the four holes in the operator enclosure and use a pre existing or supplied gland to seal the OE cable exit.
- Fix the supplied Wall Mount enclosure in the desired location within reach of the extended OE cable. (Consider the orientation of the Wall Mount enclosure in relation to the entry points of the motor wires, OE cable, controller cable and power supply.)
- Carefully secure the MCB in the fixed Wall Mount enclosure.



1. Position the edge of the board which is closest to the fuses under these clips.



2. Push down on the edge of the middle and then top corners of the MCB to secure it under the remaining four clips.



- Extend the motor wires from within the operator enclosure to the Wall Mount enclosure using the supplied terminal block. Replace the lid of the operator enclosure.
- Re-connect the extended motor wires to the MCB (Refer to the Maestro Users Manual pg.4 if required).
- Connect the extended OE cable and controller cable to the MCB using the supplied glands.
- Replace the lid of the Wall Mount enclosure and connect power to the MCB.

The Maestro Operator is now ready for use.

WARRANTY / GUARANTEE

Chamberlain Australia Pty Ltd herein referred to as "The Company"

- (a) The Company shall guarantee the goods for a period of two years from the date of invoice against any defects in construction or operation arising solely from faulty design, materials or workmanship subject to the following clauses.
- (b) The Company shall at its option, repair, modify or replace defective parts or units at its own expense and within a reasonable time but the Company shall not unless otherwise agreed in writing be liable for costs associated with removal, replacement, transport or travelling expenses incurred by the Purchaser in obtaining the goods and returning them to the Company.
- (c) The Company does not guarantee the goods where:-
 - (i) the defect rises from materials supplied by the Purchaser or a design requested by the purchaser; or
 - (ii) the defect arises from ordinary wear and tear, neglect or misuse by the Purchaser, accident, lack of care, insufficient maintenance, incorrect installation or improper use of the goods; or
 - (iii) the defect arises from force majeure; or
 - (iv) the Purchaser has in any way modified or repaired the goods without the Company's prior written consent; or
 - (v) the Purchaser has not complied with any written or oral instructions concerning the operation and maintenance of the goods; or
 - (vi) the Purchaser is in default in the observance or performance of any other provisions of the contract; or
 - (vii) The Grifco electric motors are used in conjunction with controls other than those assembled and supplied by the Company.
- (d) Where warranty is approved for goods in a used condition, such goods will be repaired or replaced and returned to the purchaser as the Company sees fit. Refunds or credits will only be considered for goods not used and in new, undamaged condition.
- (e) The Company's liability under this guarantee will be strictly limited to repairing or replacing a defective product at the Company's premises, as it may elect.
- (f) The provision of sub-clauses (a) and (b) are stipulated for the benefit of the Purchaser only and are not intended for the benefit of any third party.
- (g) Save for sub-clauses (a) and (b) the Company does not give any warranty or guarantee or make representations whatever in respect of the goods or the fitness of the goods or any part thereof or any particular purposes (whether or not that purpose is known to the Company).

Chamberlain Australia Pty Ltd

15 Dell Rd West Gosford
NSW 2250

Australia

Ph. +61 (02) 43233877

Fax. +61 (02) 43233882

www.grifco.com.au

sales@grifco.com.au

technical@grifco.com.au